



Santa Barbara Police Department

Compstat

July 2019

Santa Barbara Police Department

July 2019 CompStat Executive Summary

Part 1 Crimes	May-19	June-19	July-19
Homicide	0	2	0
Rape	6	6	3
Robbery	6	8	6
Aggravated Assault	31	40	33
Residential Burglary	14	12	7
Commercial Burglary	22	12	11
Burglary/Theft from Vehicle	34	14	21
Grant Theft Auto	18	10	19
Other Theft	96	78	103
Arson	2	0	0

Gang Crimes	May-19	June-19	July-19
Gang Incidents	10	11	11
Gang Related	4	14	17

Traffic Report	May-19	June-19	July-19
Total Traffic Collisions	93	75	83
Pedestrian TC	1	1	7
Bicycle TC	7	7	9
Injury TC	32	20	39
DUI TC	11	8	11

Response Times	May-19	June-19	July-19
Priority 1 (P-3 7.0 Minutes)	5.8	5.8	5.5
Priority 2 (P-3 14.5 Minutes)	19.4	18.5	17.8
Priority 3 (P-3 30.0 Minutes)	41	35.2	42.7
Priority 4 (50.0 Minutes)	62	59.7	62

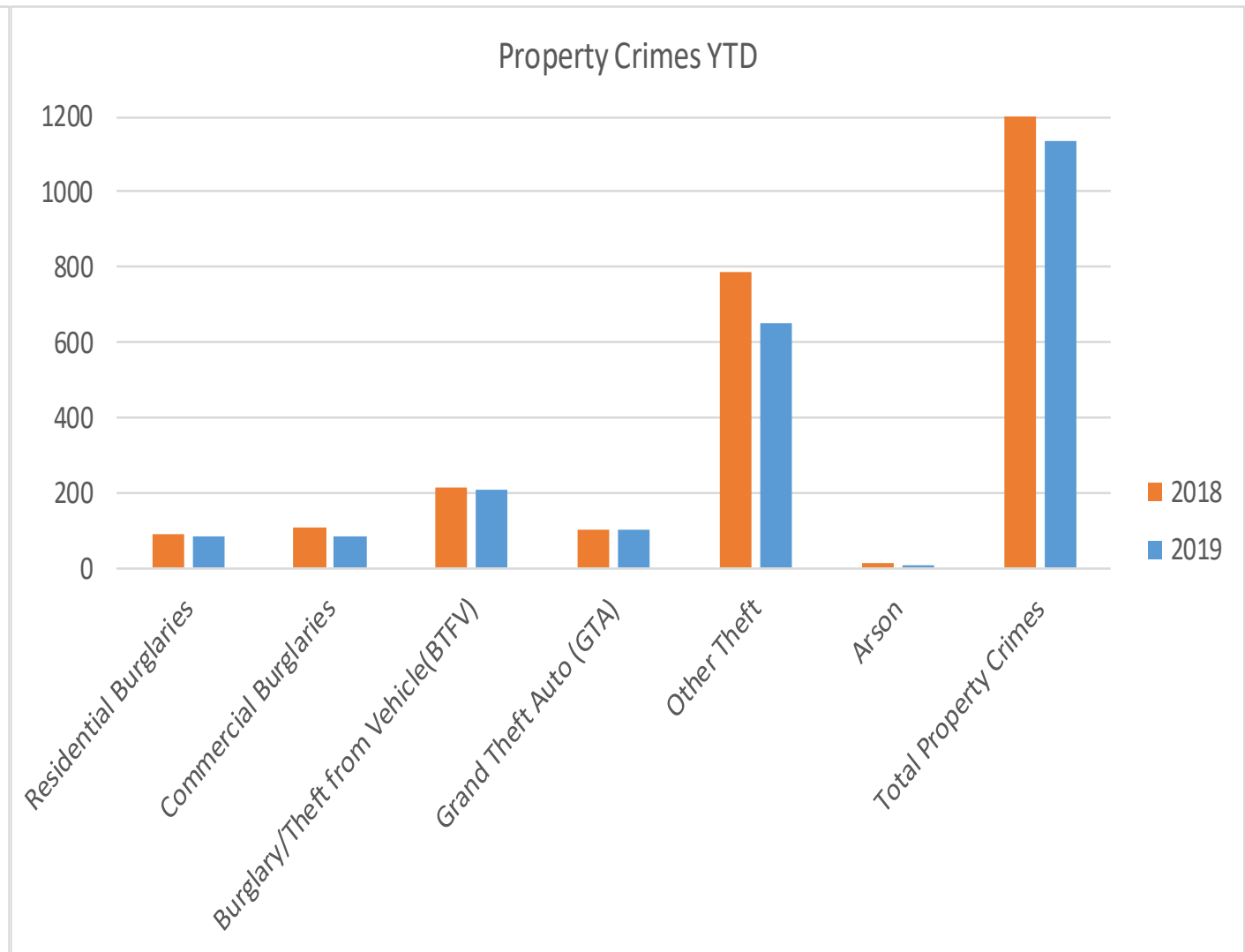
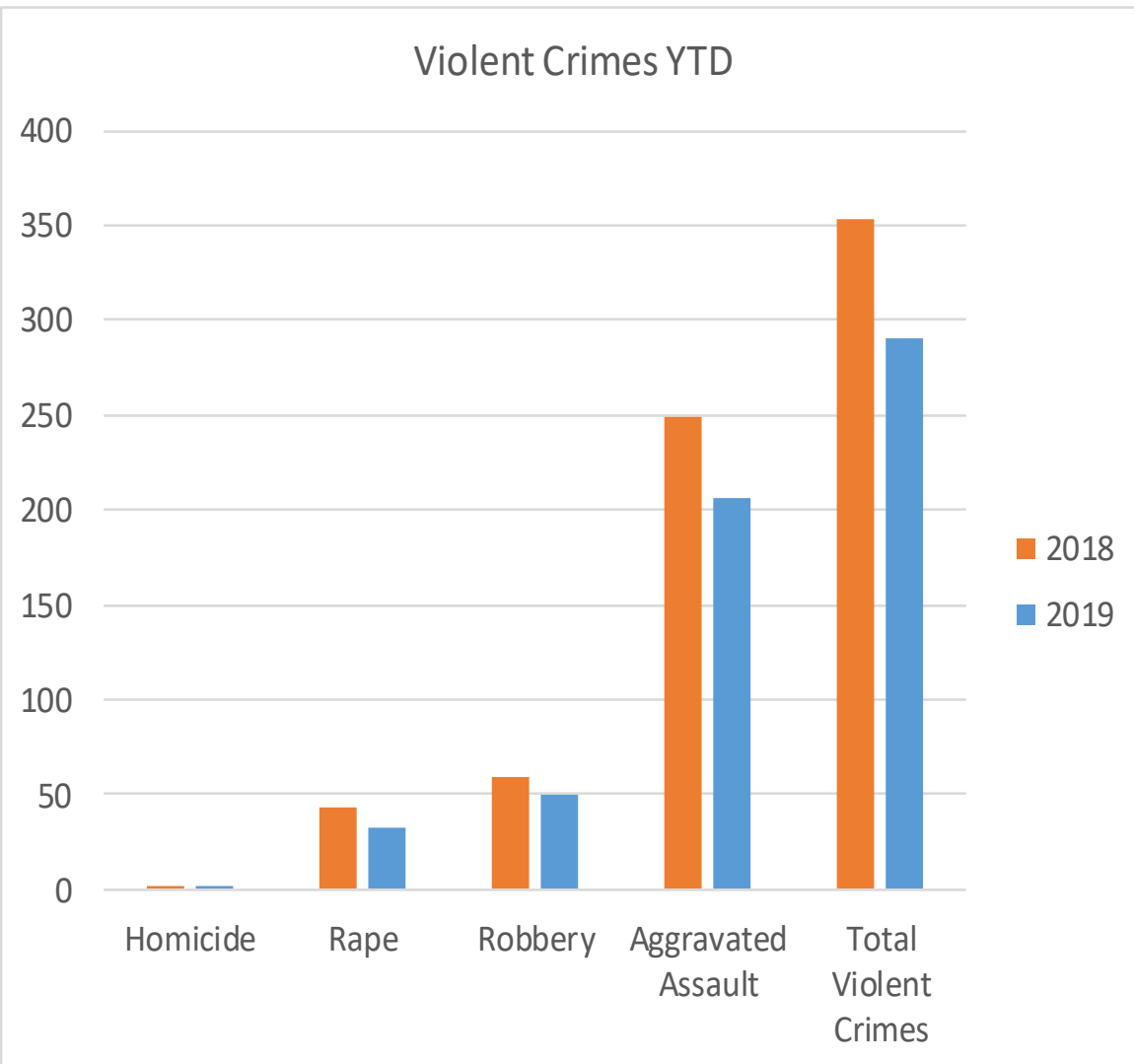
Field Activity	May-19	June-19	July-19
Felony Arrests	111	109	101
Misdemeanor Arrests	177	156	171
Cite Release	334	341	399
DUI Arrests	29	32	29
Sobering Station Admissions	22	26	32
Street Checks	289	330	350
Parking Citations	5855	5552	5689
Traffic Cites-Department	285	237	247
Traffic Cites- Motors	108	50	61
Call Volume	3028	2897	3107
On View Activity	2046	2312	2184

Use of Force	May-19	June-19	July-19
Number of UOF	14	10	16

Part 1 Crimes

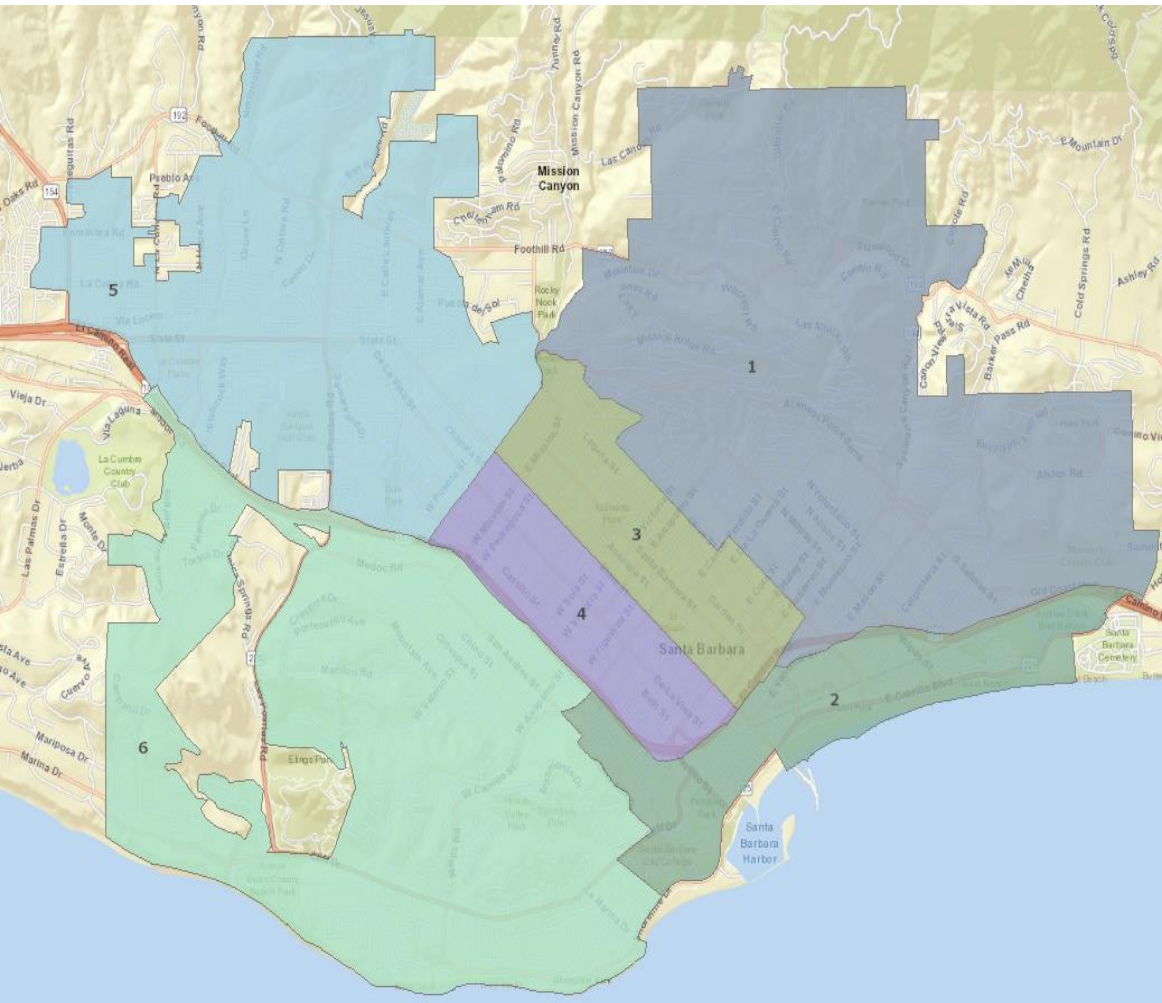
Crime Description	May-19	June-19	July-19	Percent Change	July-18	Percent Change	YTD-18	YTD-19	Percent Change
Homicide	0	2	0	-100%	0		2	2	0%
Rape	6	6	3	-50%	6	-50%	43	33	-23%
Robbery	6	8	6	-25%	7	-14%	59	50	-15%
Aggravated Assault	31	40	33	-18%	38	-13%	249	206	-17%
Total Violent Crimes	43	56	42	-25%	51	-18%	353	291	-18%
Residential Burglaries	14	12	7	-42%	15	-53%	88	83	-6%
Commercial Burglaries	22	12	11	-8%	9	22%	106	85	-20%
Burglary/Theft from Vehicle(BTFV)	34	14	21	50%	29	-28%	214	205	-4%
Grand Theft Auto (GTA)	18	10	19	90%	19	0%	99	103	4%
Other Theft	96	78	103	32%	126	-18%	786	650	-17%
Arson	2	0	0		4	-100%	15	9	-40%
Total Property Crimes	186	126	161	28%	202	-20%	1308	1135	-13%

Part 1 Crimes

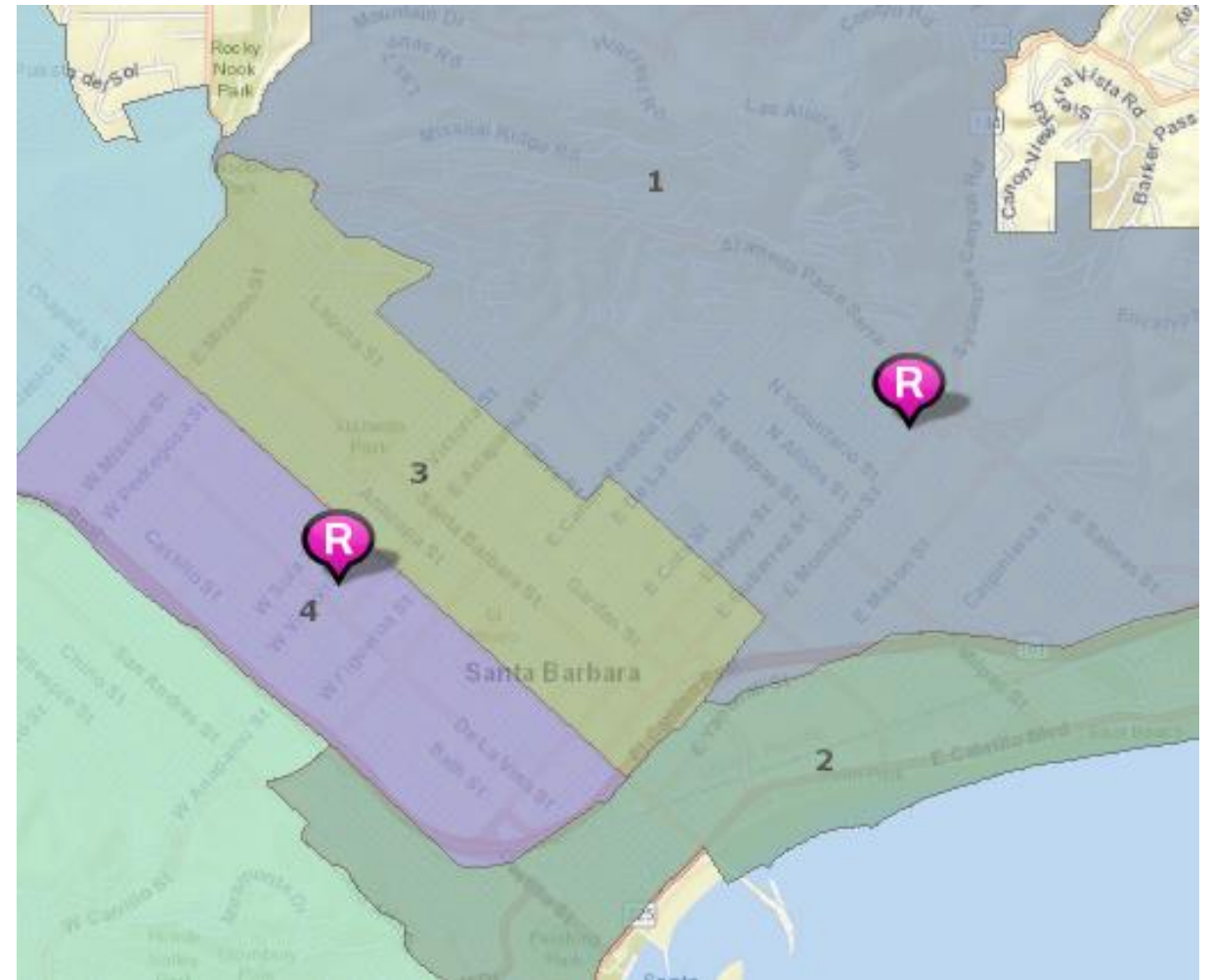


Part 1 Crimes -Violent Crimes July 2019

Homicide



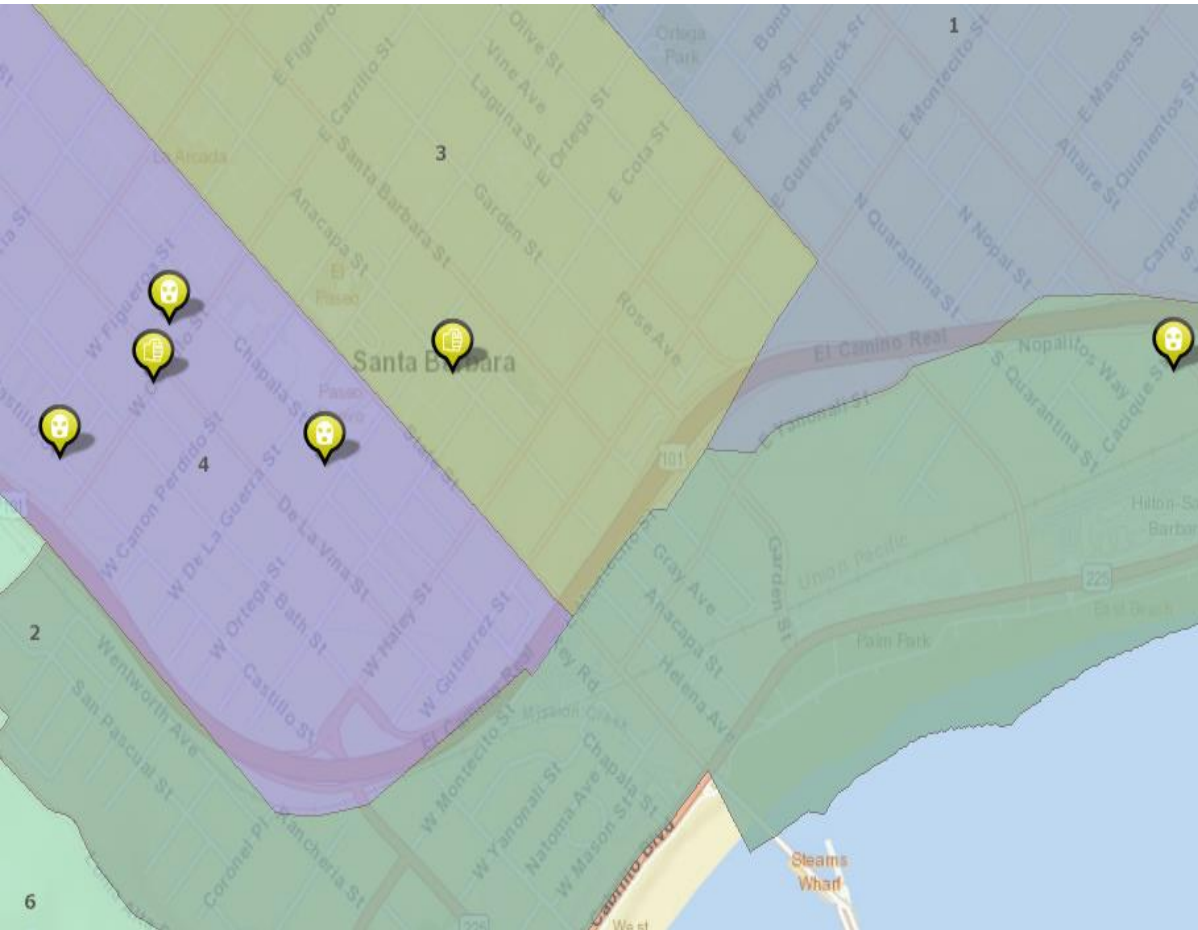
Rape



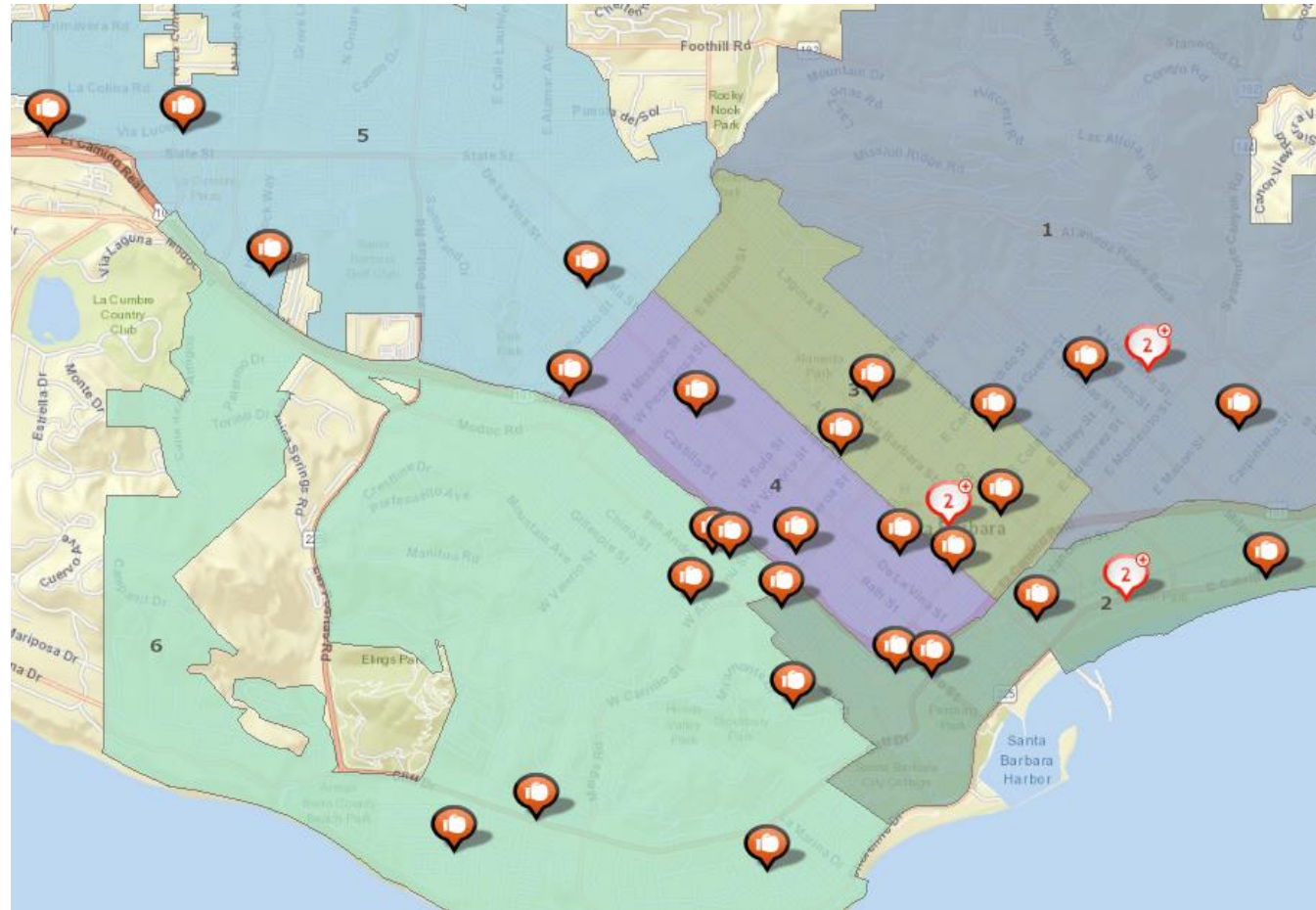
Numbered pins indicates more than one offense or incident at that location

Part 1 Crimes -Violent Crimes July 2019

Robbery



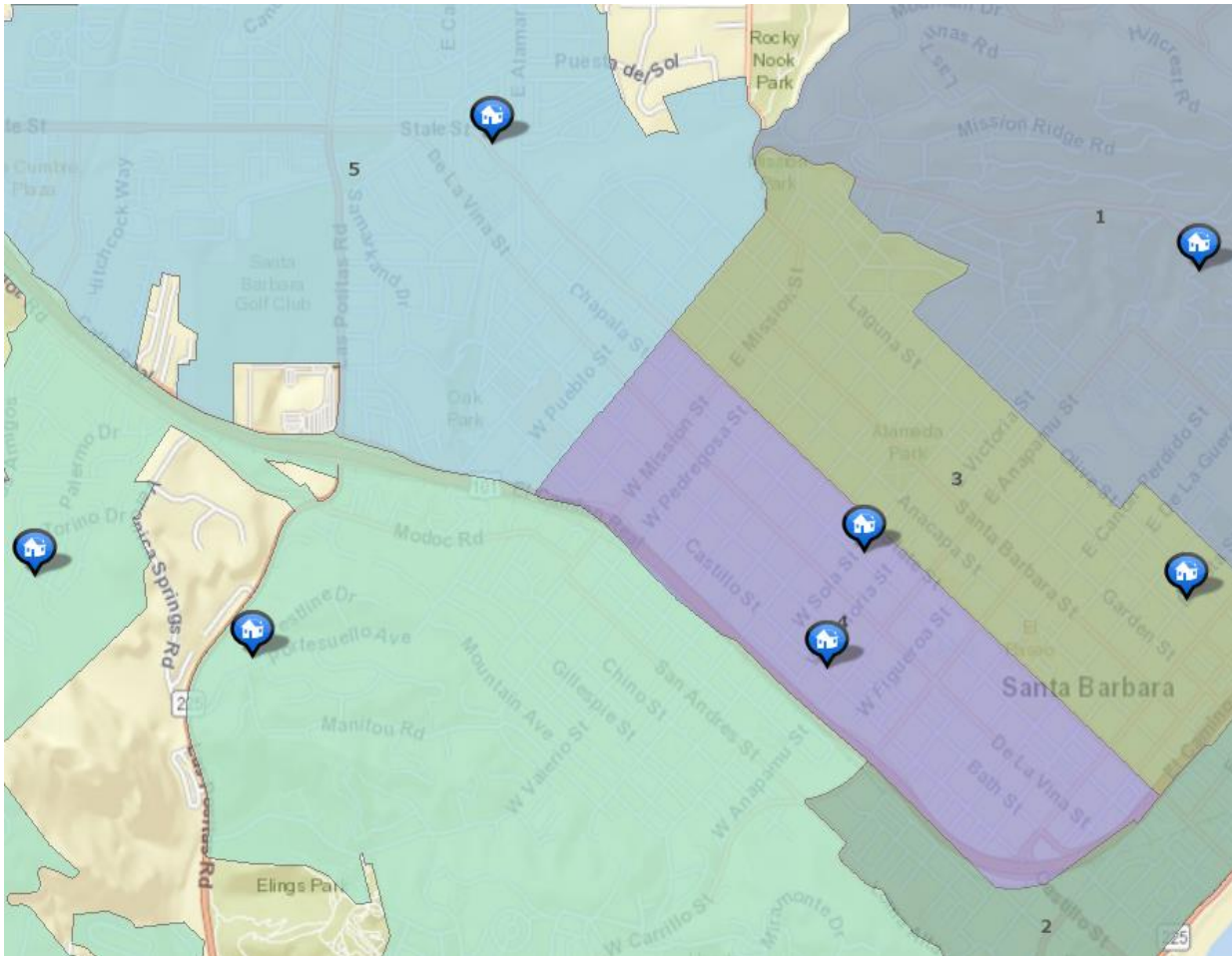
Aggravated Assault



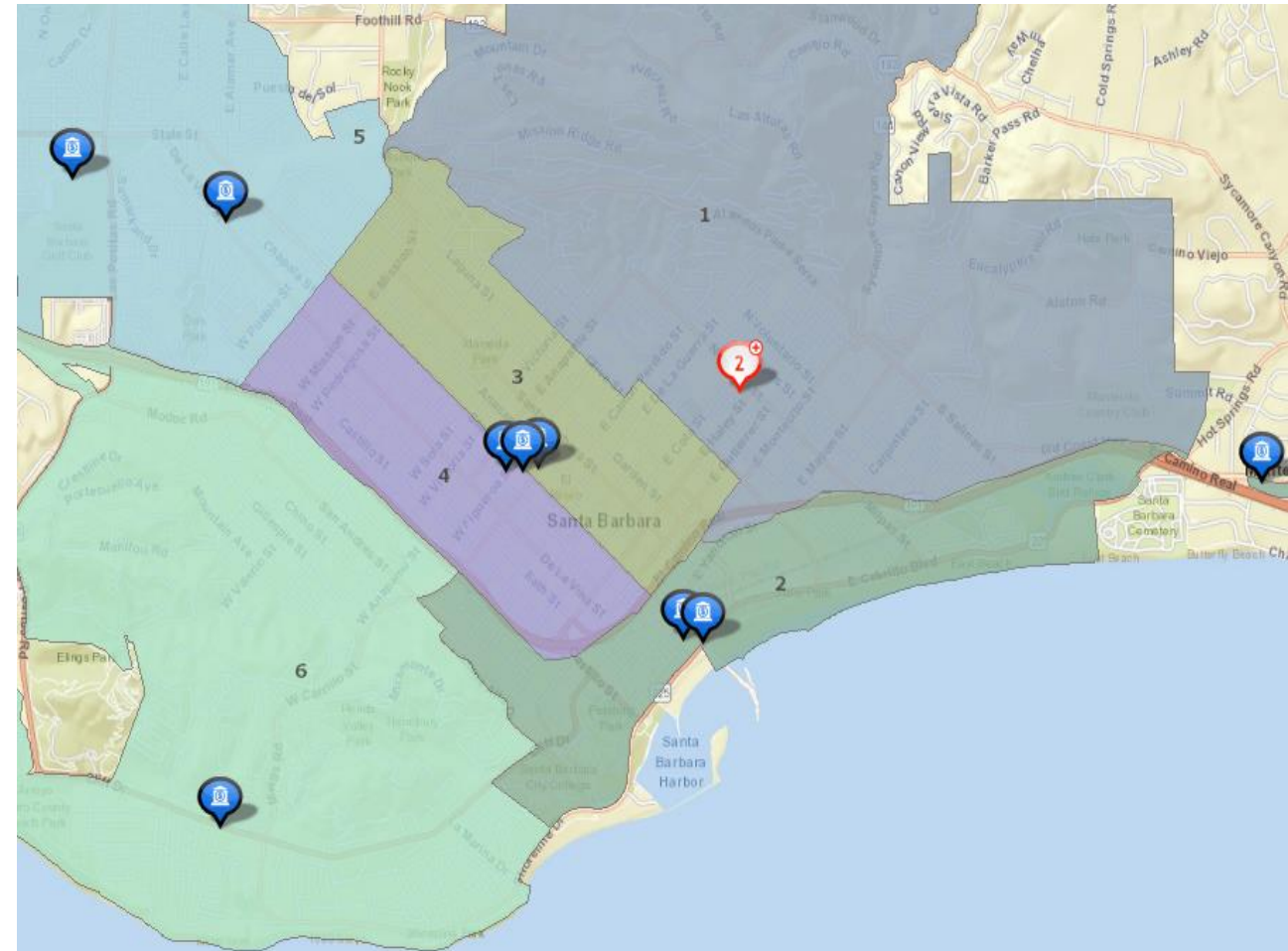
Numbered pins indicates more than one offense or incident at that location

Part 1 Crimes-Property Crimes July 2019

Residential Burglaries



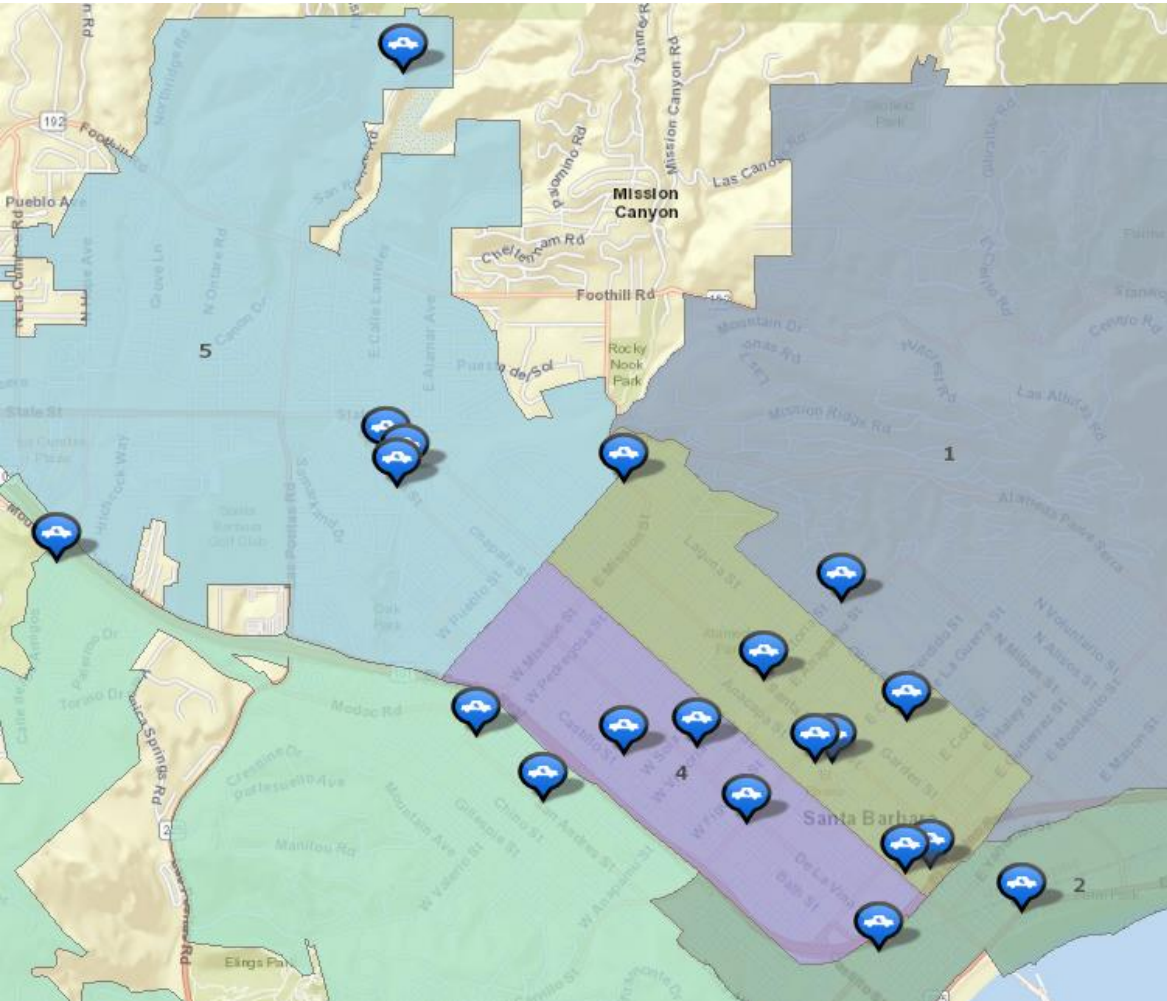
Commercial Burglaries



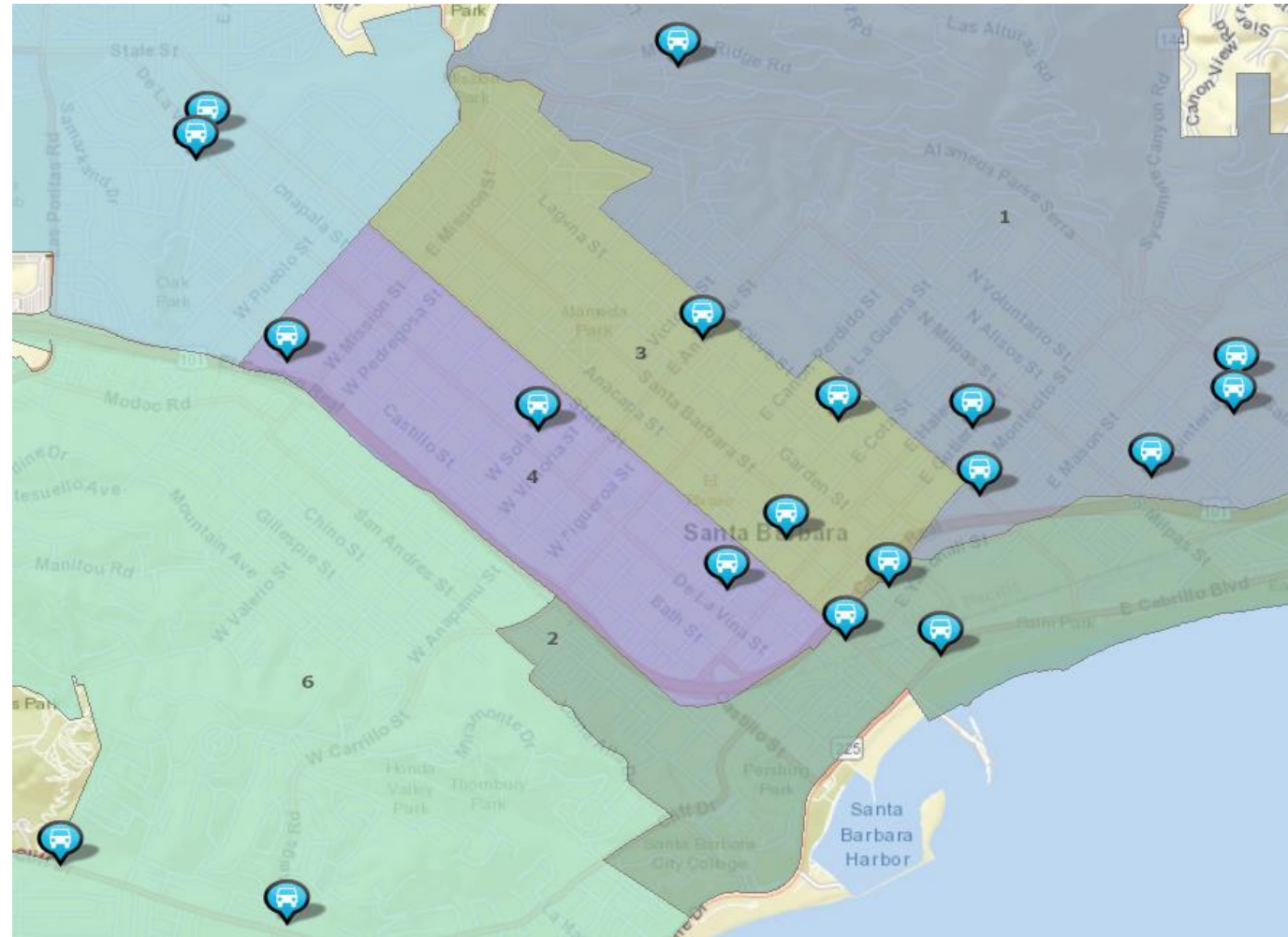
Numbered pins indicates more than one offense or incident at that location

Part 1 Crimes-Property Crimes July 2019

Burglary/Theft from Vehicle



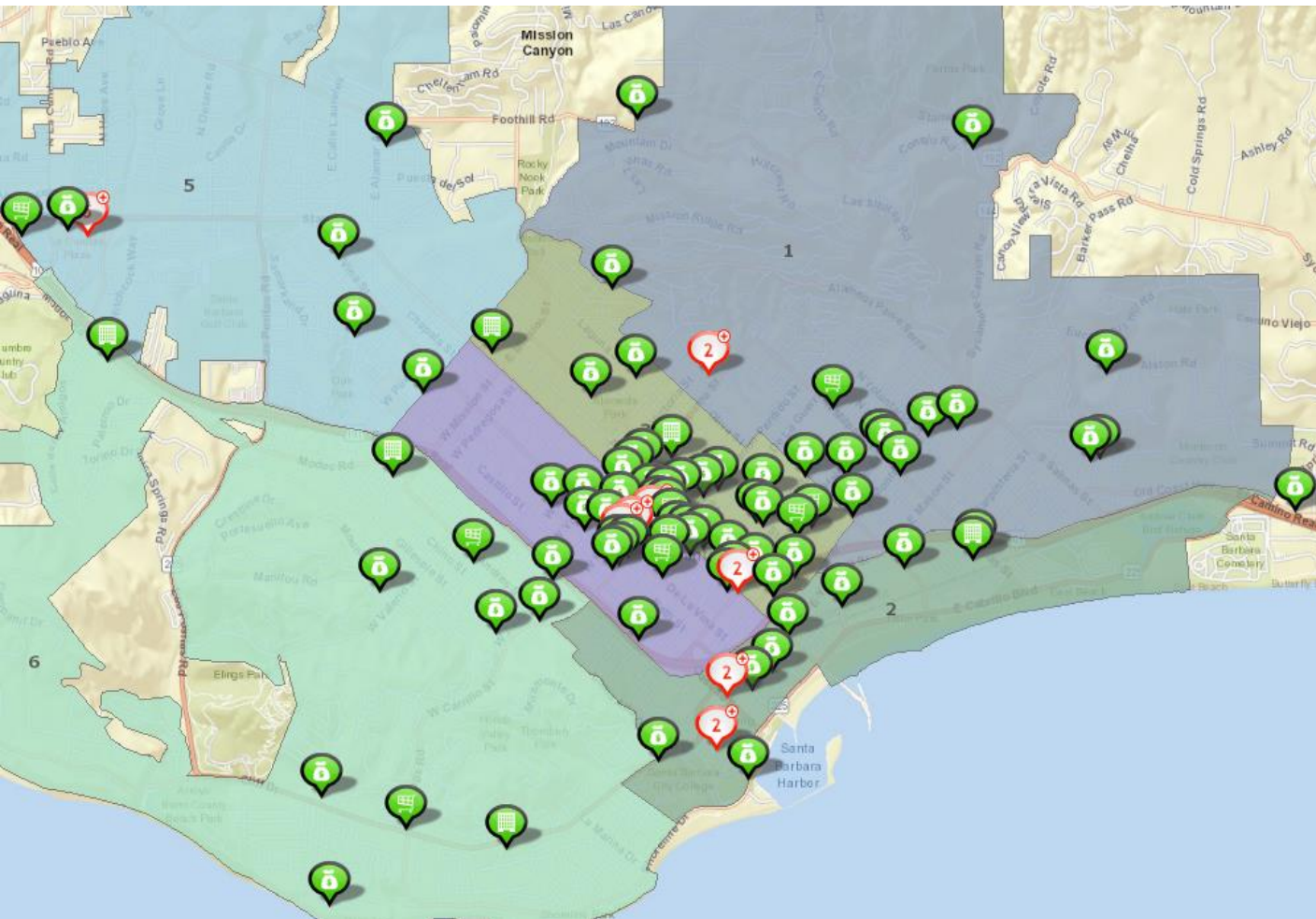
Grand Theft Auto



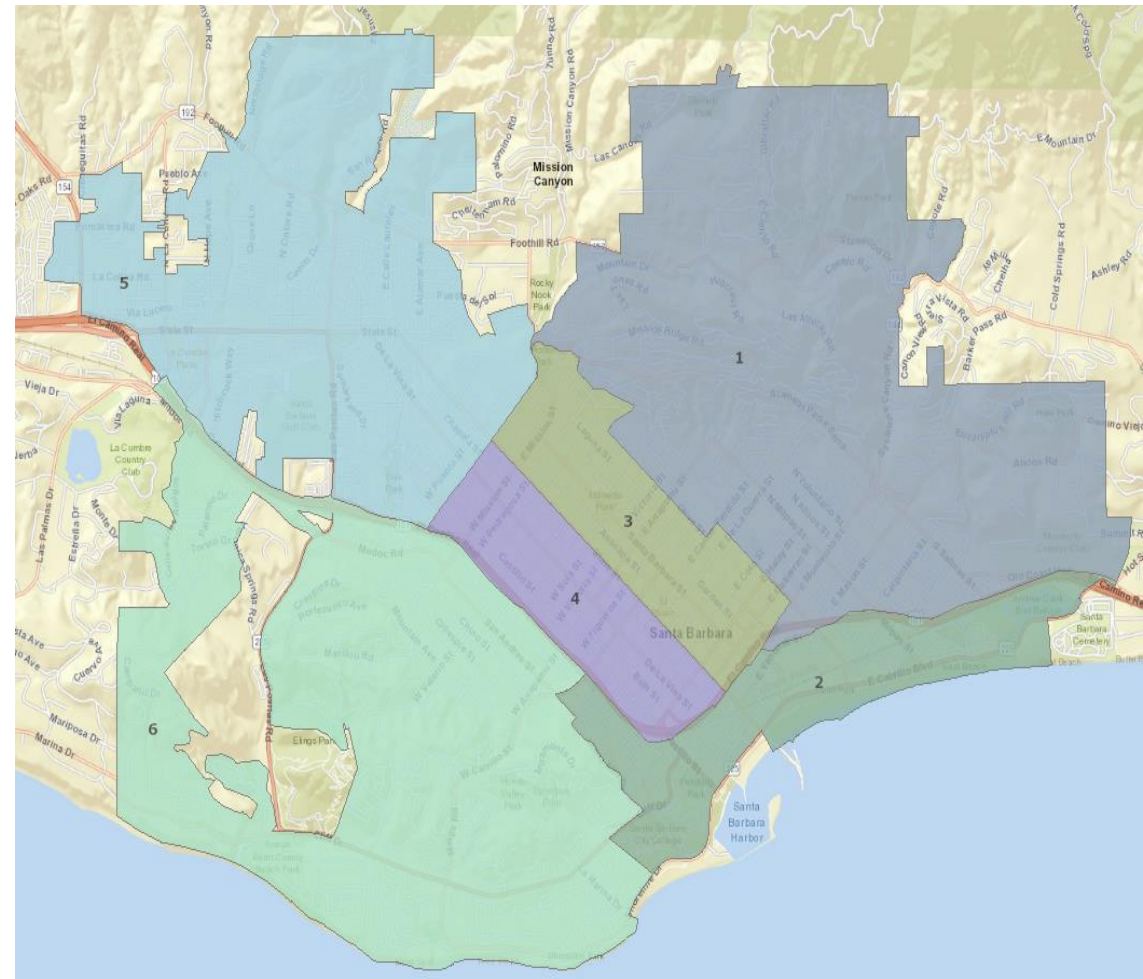
Numbered pins indicates more than one offense or incident at that location

Part 1 Crimes-Property Crimes July 2019

Other Theft



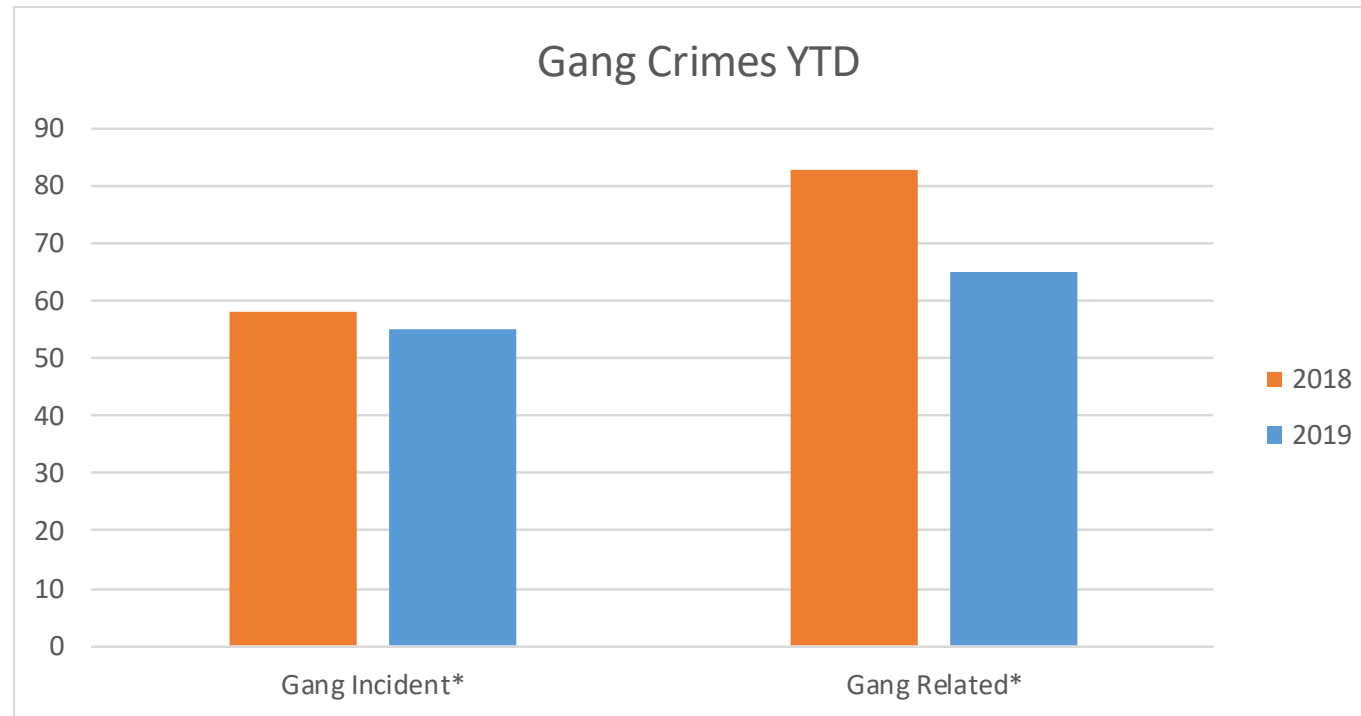
Arson



Numbered pins indicates more than one offense or incident at that location

Gang Crimes

Crime Description	May-19	June-19	July-19	Percent Change	July-18	Percent Change	YTD-18	YTD-19	Percent Change
Gang Incident*	10	11	11	0%	5	120%	58	55	-5%
Gang Related*	4	14	17	21%	6	183%	83	65	-22%

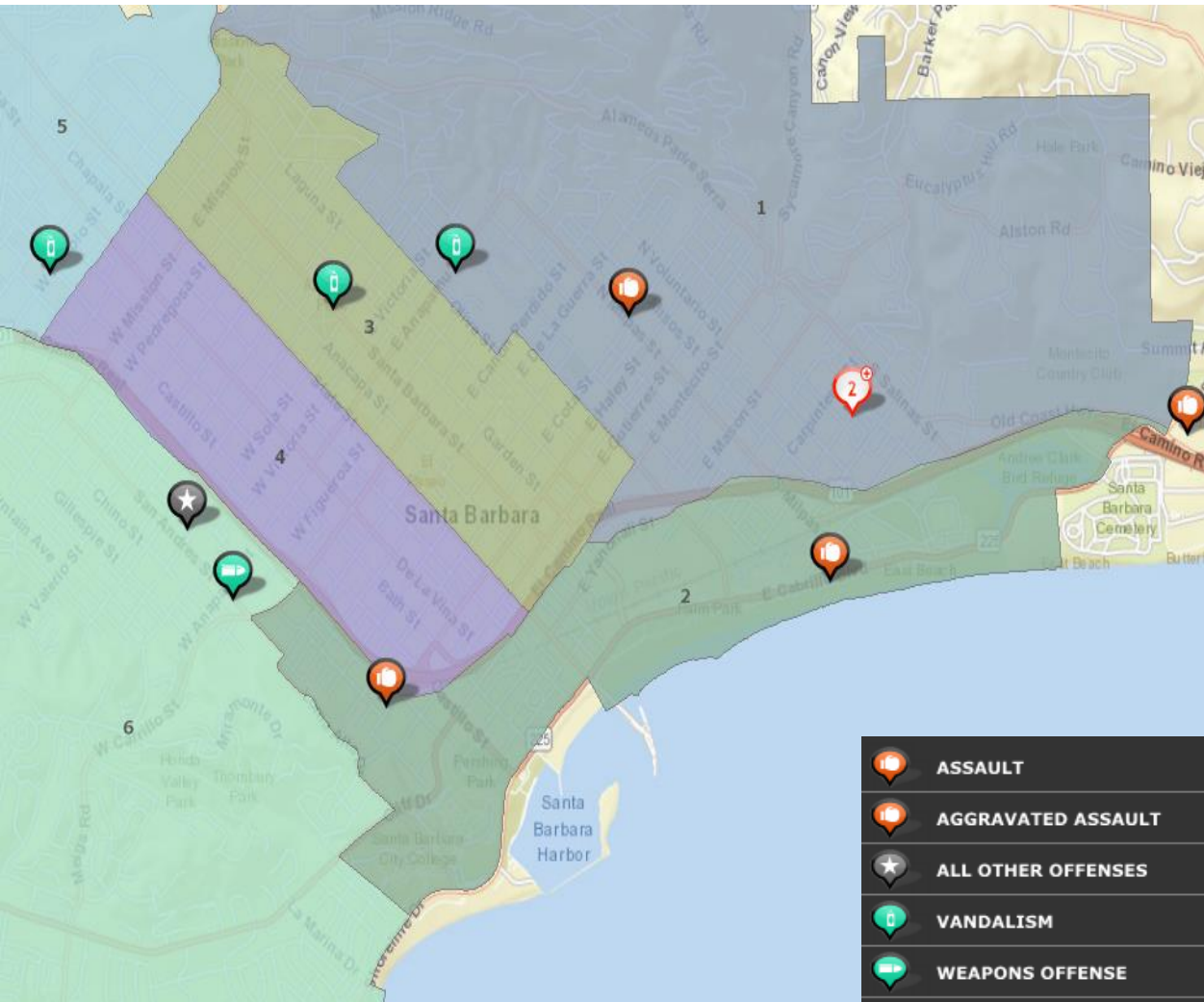


*Gang Incident- Crimes committed for the benefit of the gang

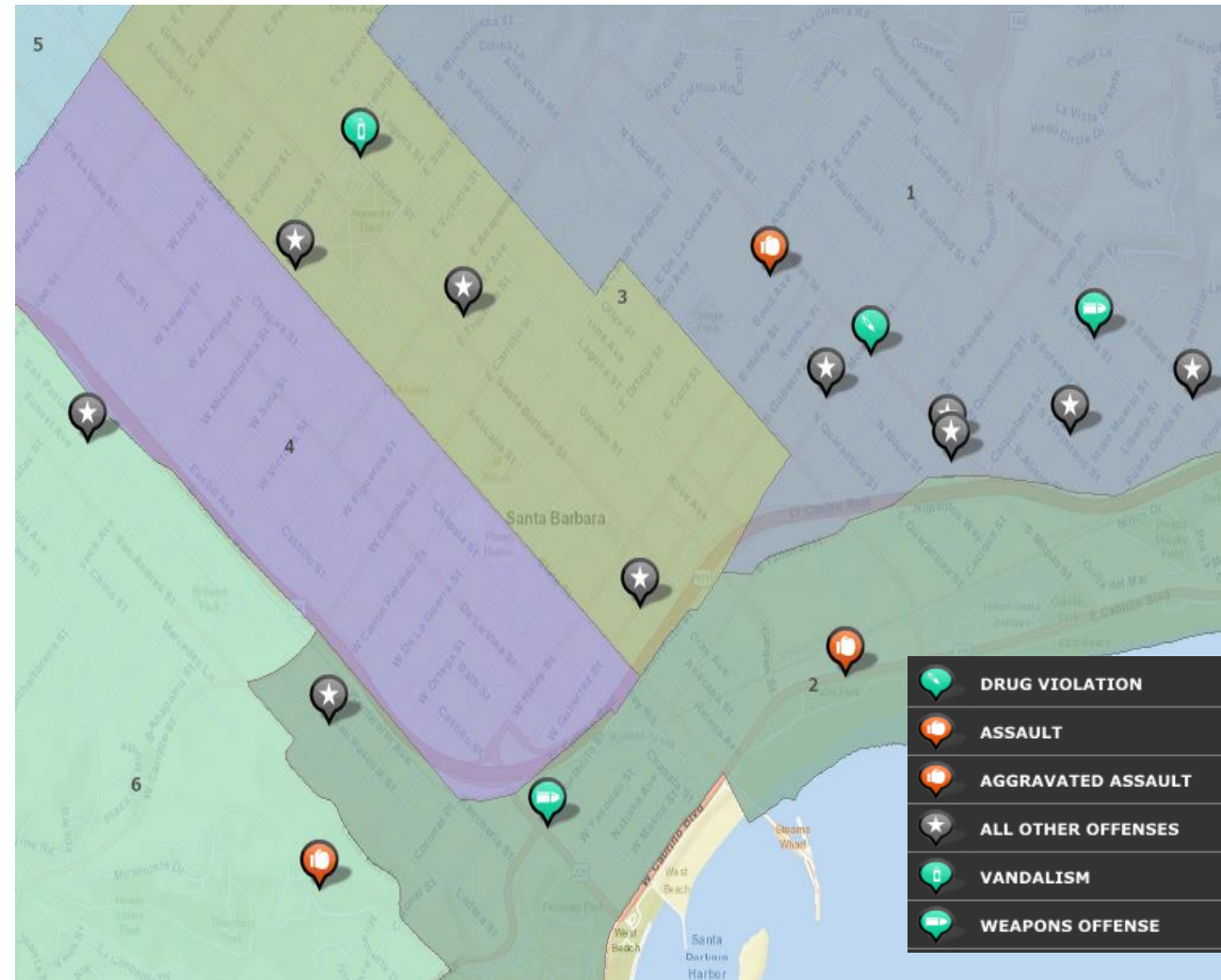
*Gang Related- Crimes committed by gang members but not necessarily for the benefit of the gang

Gang Crimes - July 2019

Gang Incident

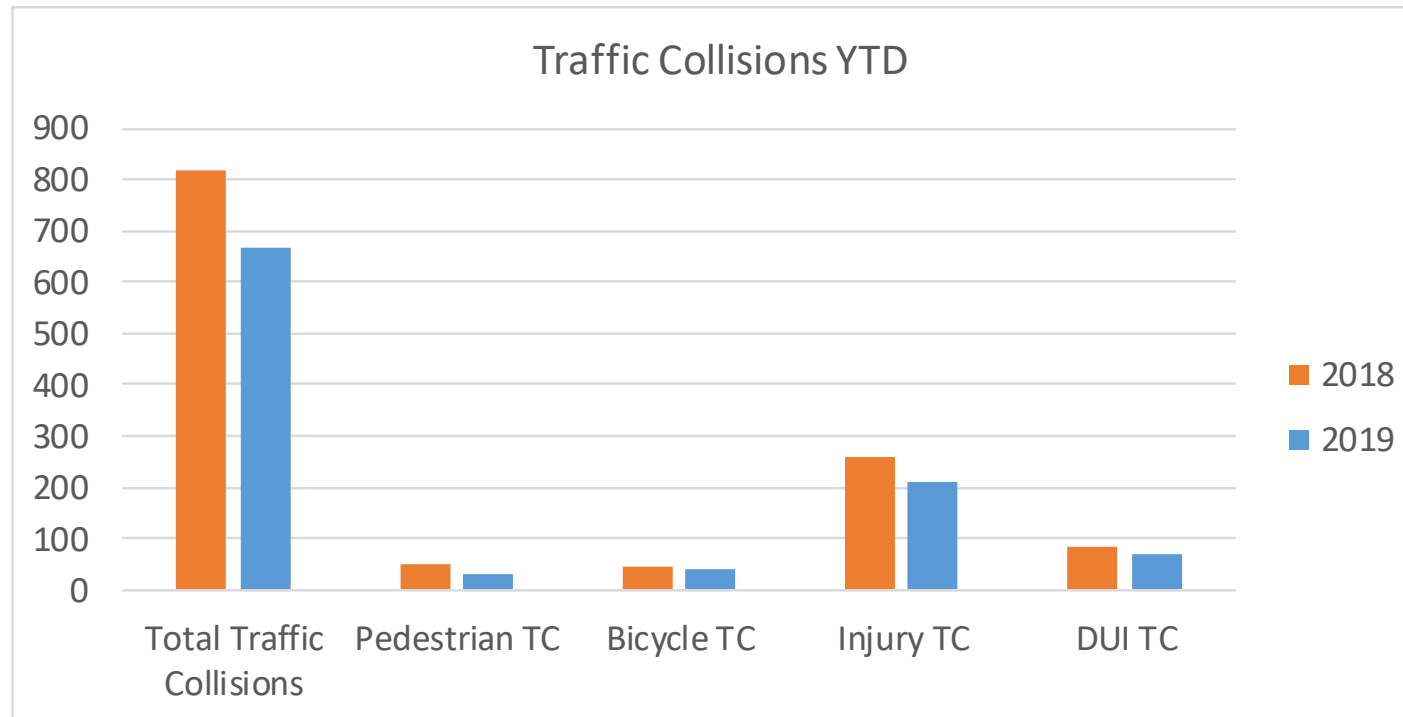


Gang Related



Traffic Report

Traffic	May-19	June-19	July-19	Percent Change	July-18	Percent Change	YTD-18	YTD-19	Percent Change
Total Traffic Collisions	93	75	83	11%	140	-41%	818	669	-18%
Pedestrian TC	1	1	7	600%	3	133%	48	28	-42%
Bicycle TC	7	7	9	29%	7	29%	47	39	-17%
Injury TC	32	20	39	95%	40	-3%	259	211	-19%
DUI TC	11	8	11	38%	16	-31%	82	71	-13%



Response Times

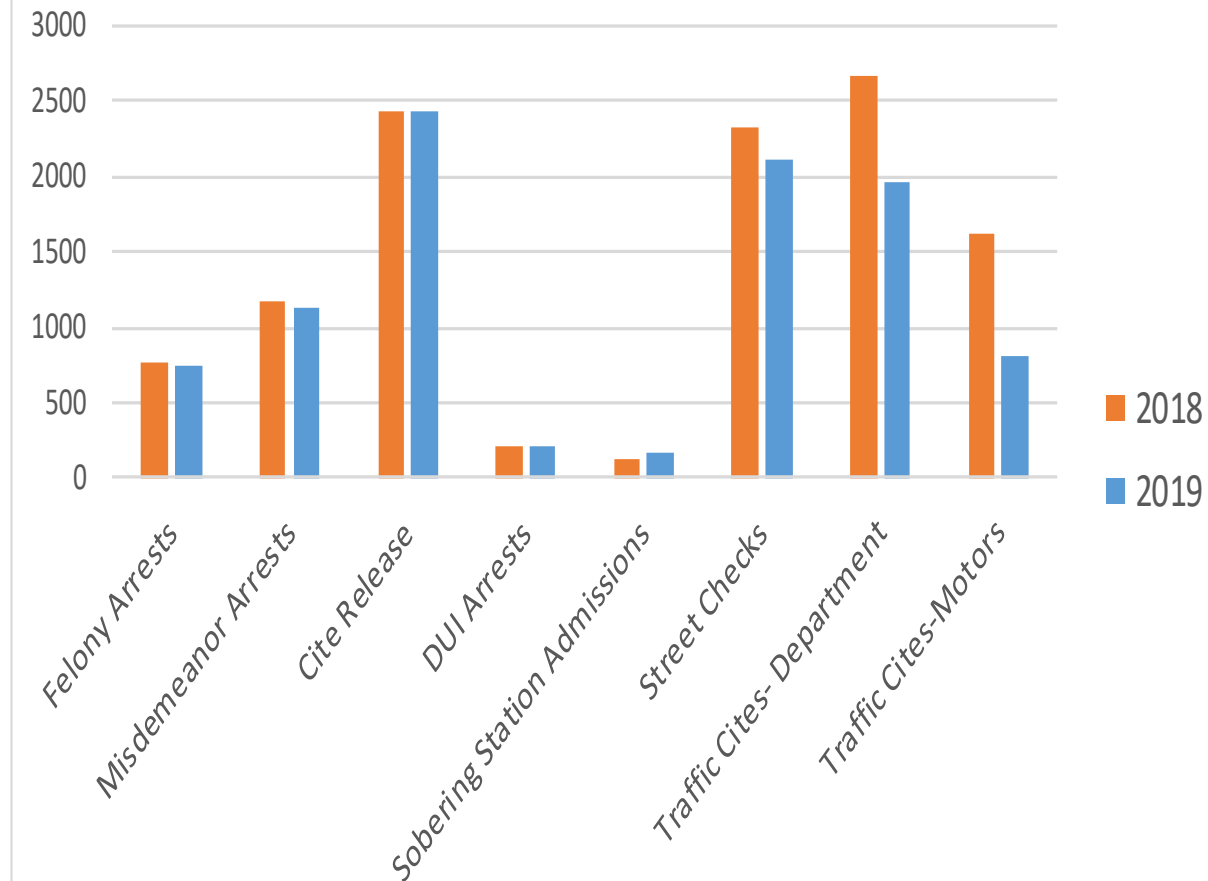
		May-19	June-19	July-19
Priority 1 P3 TARGET 7.0 In-Progress (May result in Injury or Death)	Avg Queue Time	1.8	2.3	1.8
	Avg Drive Time	4.0	3.5	3.8
	Avg Response Time	5.8	5.8	5.5
	Number of Calls	69	47	50
Priority 2 P3 TARGET 14.5 In-Progress (May not result in Injury or Death)	Avg Queue Time	14.5	13.8	13.4
	Avg Drive Time	4.9	4.7	4.4
	Avg Response Time	19.4	18.5	17.8
	Number of Calls	1381	1330	1340
Priority 3 P3 TARGET 30.0 In-Progress (Alarms and Investigations)	Avg Queue Time	33.6	29.6	34.6
	Avg Drive Time	7.4	5.7	8.1
	Avg Response Time	41.0	35.2	42.7
	Number of Calls	475	439	502
Priority 4 P3 TARGET 50.0 Cold Investigation	Avg Queue Time	51.8	50.8	54.7
	Avg Drive Time	10.2	8.9	7.2
	Avg Response Time	62.0	59.7	62.0
	Number of Calls	980	968	1087

Field Activity

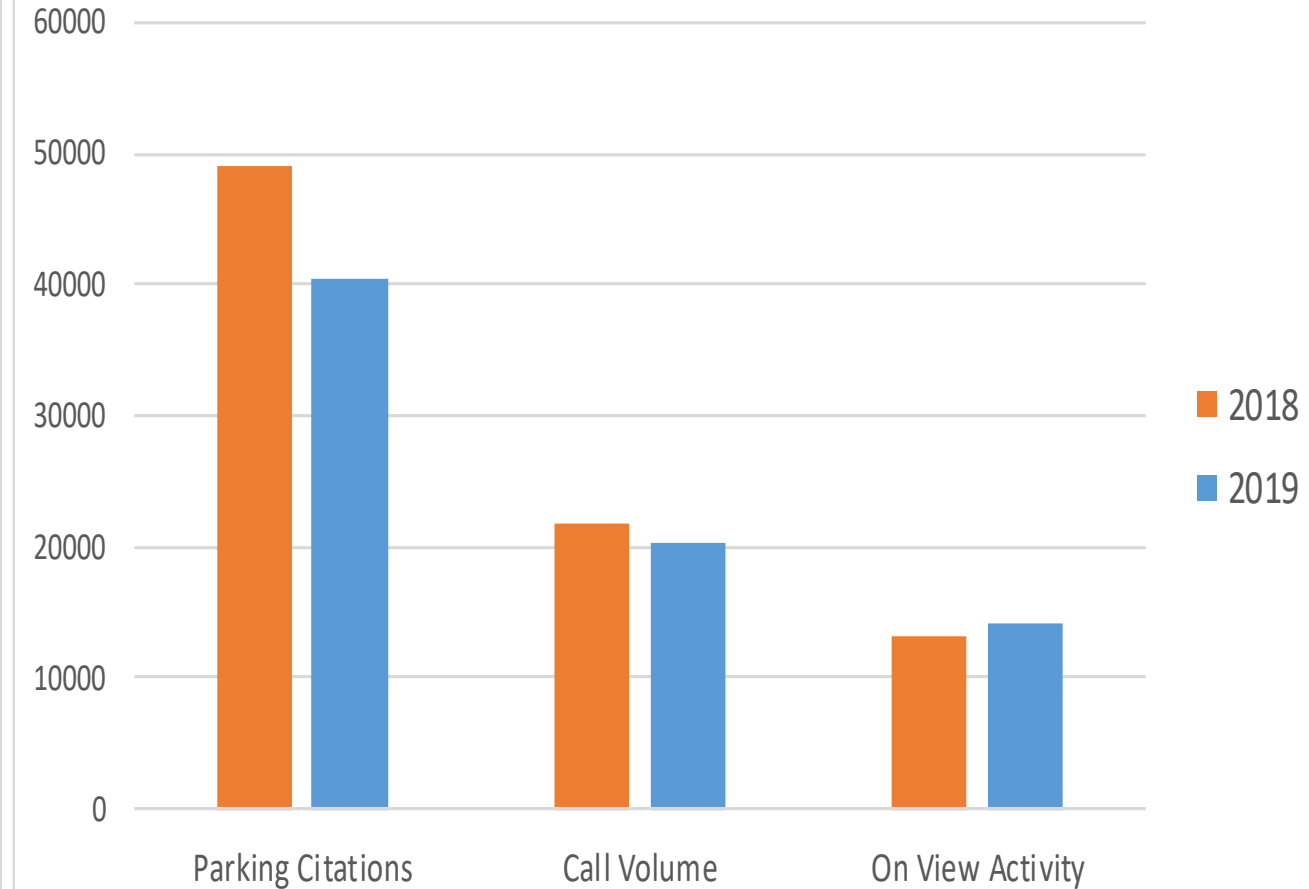
Field Activity	May-19	June-19	July-19	Percent Change	July-18	Percent Change	YTD-18	YTD-19	Percent Change
Felony Arrests	111	109	101	-7%	98	3%	771	753	-2%
Misdemeanor Arrests	177	156	171	10%	194	-12%	1166	1118	-4%
Cite Release	334	341	399	17%	305	31%	2422	2436	1%
DUI Arrests	29	32	29	-9%	35	-17%	213	199	-7%
Sobering Station Admissions	22	26	32	23%	15	113%	118	167	42%
Street Checks	289	330	350	6%	406	-14%	2324	2121	-9%
Parking Citations	5855	5552	5689	2%	6580	-14%	49054	40405	-18%
Traffic Cites- Department	285	237	247	4%	457	-46%	2674	1971	-26%
Traffic Cites-Motors	108	50	61	22%	312	-80%	1617	804	-50%
Call Volume	3028	2897	3107	7%	3458	-10%	21727	20218	-7%
On View Activity	2046	2312	2184	-6%	1862	17%	13181	14172	8%

Field Activity

Field Activity YTD



Field Activity YTD



Use of Force

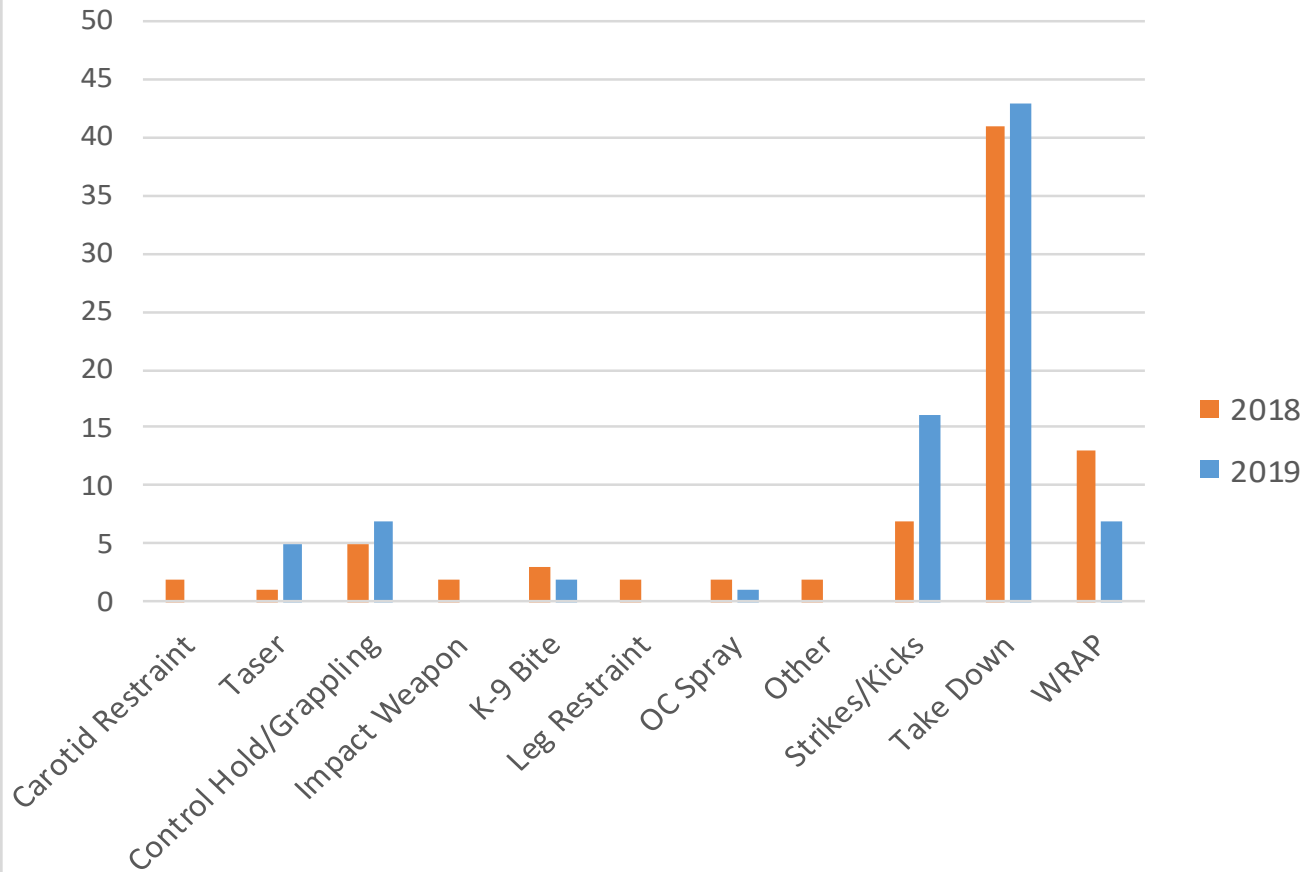
Use of Force Totals*	May-19	June-19	July-19	Percent Change	July-18	Percent Change	YTD-18	YTD-19	Percent Change
Number of UOF	14	10	16	60%	12	33%	80	82	2%
Number of 148 PC/69 PC Reports	22	27	33	22%	26	27%	187	176	-6%
Type of Force**	May-19	June-19	July-19	Percent Change	July-18	Percent Change	YTD-18	YTD-19	Percent Change
Carotid Restraint	0	0	0		1	-100%	2	0	-100%
Taser	1	0	2		0		1	5	400%
Control Hold/Grappling	1	0	0		1	-100%	5	7	40%
Firearm	1	0	0		0		0	1	
Extended Range Impact Weapon	0	0	0		0		0	0	
Impact Weapon	0	0	0		1	-100%	2	0	-100%
K-9 Bite	0	0	0		0		3	2	-33%
Leg Restraint	0	0	0		1	-100%	2	0	-100%
OC Spray	0	0	1		0		2	1	-50%
Other	0	0	0		0		2	0	-100%
Strikes/Kicks	1	5	4	-20%	0		7	16	129%
Take Down	8	5	9	80%	6	50%	41	43	5%
WRAP	2	0	0		2	-100%	13	7	-46%
Treatment	May-19	June-19	July-19	Percent Change	July-18	Percent Change	YTD-18	YTD-19	Percent Change
No Treatment Necessary	4	3	5	67%	3	67%	38	25	-34%
Refused Treatment	3	3	0	-100%	6	-100%	9	12	33%
Transported to Hospital	6	3	9	200%	0		18	31	72%
Treated On Scene	0	1	1	0%	0		5	6	20%
Not Reported	1	0	1		3	-67%	10	8	-20%
Grand Total	14	10	16	60%	12	33%	80	82	2%

*Number of reports with use of force.

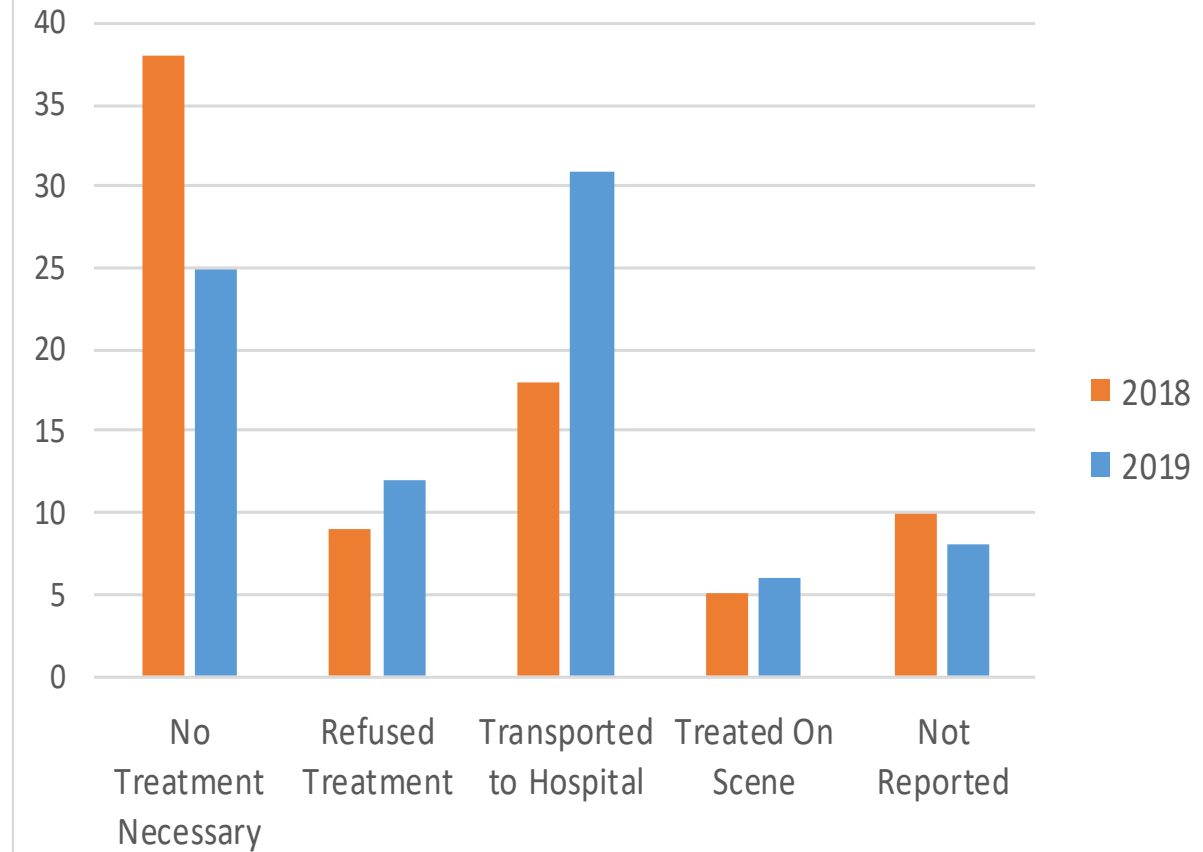
** Because more than one type of force could be used, the number of force type is based on a hierarchy rule. The type of force used that is highest on the hierarchy is reported.

Use of Force

Type of Force YTD



Treatment YTD



Use of Force

Percentage of Type of Force Used	July-19
Carotid Restraint	0%
Taser	13%
Control Hold/Grappling	0%
Firearm	0%
Extended Range Impact Weapon	0%
Impact Weapon	0%
K-9 Bite	0%
Leg Restraint	0%
OC Spray	6%
Other	0%
Strikes/Kicks	25%
Take Down	56%
WRAP	0%
Not Reported	0%

